

KONICA 7075

DIGITAL DOCUMENT SYSTEM



FOR FURTHER DETAILS CONTACT:



1800 789 389

KONICA AUSTRALIA PTY LIMITED ABN 50 001 065 096 • Branches and Dealer Network • www.konica.com.au



KONICA 7075. WHEN SPEED, PRODUCTIVITY AND RELIABILITY MATTER.

PRODUCTIVITY, PROFESSIONALISM AND FLEXIBILITY FOR THE NEW WORLD OF DOCUMENT PRODUCTION.

The right information at the right time and in the right place as a high-quality document: these are the imperative success factors for companies and their customers today. Digital printing and copying systems, flexibly integrated into networks and connected with staff and departments, put the technological scope of this new age onto paper with particular speed, professionalism and primarily with individual character.

The Konica 7075 Digital Document System perfectly commands this and many other disciplines. Either as a central, digital printing system in the in-house printing shop, or decentrally as a digital high-performance printer or copier in departments or corridors: this modular system can be ideally adapted to the increasing demands of a company at any time and extended as required.

The Konica 7075 Digital Document System: the new, flexible performance concept for professional document production.



COPYING AND PRINTING



- Real-time document production with direct duplex printing
- 75 A4 sheets per minute
- Up to 500,000 pages per month
- Dual access architecture that allows up to five jobs to be scanned while the current is printing
- 75 A4 per page per minute document scanning for copying
- Large-volume paper feed with 6,150 sheets
- Up to 200gsm paper

CONTROLLER (OPTIONAL)



- Productive class controller with professional features such as booklet production and covers
- Fast processing speeds that support PCL 6e and Postscript Level 3 (optional)
- Networkable with the KN-302 option – supports all major network operating systems
- Web based system management and job information
- Hard disk drive standard to make sure that the Konica 7075 has the least possible impact on your network

PROFESSIONAL FINISHING



- Finishing option for flexible document production
- FS-108BM – offset sorting finisher with 8 position stapling plus the addition of centre stapling and booklet folding
- Pre-printed or blank pages into a document. Perfect when you need to combine colour laser output into documents
- Trim your booklets to give your project that professional image

KONICA 7075. MEASURABLY MORE PRODUCTIVE.

POTENTIAL MEANS NOTHING WITHOUT THE ABILITY TO PERFORM CONSISTENTLY AND RELIABLY.

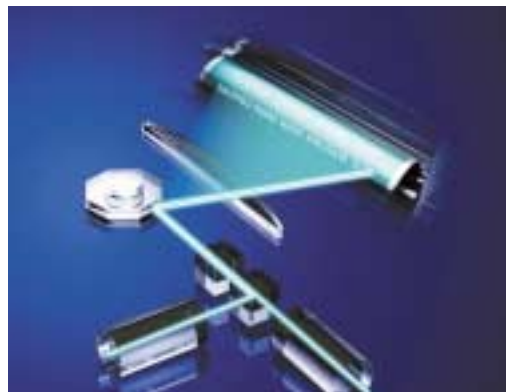
As an historical leader in the field of imaging, Konica has the unique advantage of accumulated experience. This translates into engineering that takes every detail into consideration. In a heat transfer system, for example, melting toner onto the paper suddenly increases temperature which can shrink the paper size ever so slightly or cause it bend at the edges.

The Konica 7075 Digital Document System accurately heats both sides to avoid any bending. It also adjusts the image size of the second side in duplex copy or print to account for paper shrinkage.

In short, Konica's digital technology works hard so your output materials are of excellent quality.

Controlled Twin-Beam Laser

The Konica 7075 Digital Document System uses the same Twin-Beam Laser Writing System that has proven itself in other Konica digital machines. This high-speed writing system uses parallel laser beams to scribe to the drum at twice the speed. Now, with the addition of a highly accurate laser control system, imaging quality is refined even further. The control system uses laser intensity to vary the size of the dots that are made. Variable dots means more accurate image reproduction with subtler detail. Even after numerous adjustments to the laser during printing, this control system ensures that the laser intensity returns to standard when power is turned on each day.

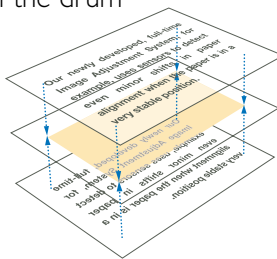


Selectable DPI

At the console, the Konica 7075 Digital Document System reproduces originals at a clear 400 dpi resolution. And as a network printer, you have the choice of printing in either 400 dpi or 600 dpi. Selectable output quality reduces network traffic and facilitates resource management.

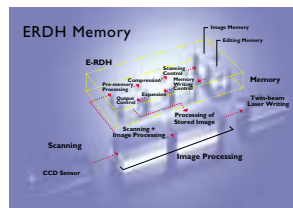
Image Adjustment System

We at Konica understand there is a lot more to high-quality reprographics than the number of dots you can fit in an inch. Our newly developed, full-time Image Adjustment System, for example, uses sensors to detect even minor shifts in paper alignment. The adjustment is made to the data on the drum and printed on the paper without losing a second or running the risk of paper jam. This adjustment is ideal for producing high-quality duplex documents.



Electronic Recirculating Document Handler (ERDH) Memory

The ERDH receives all digitised data from the scanning unit or via the Print Controller. This data is simultaneously stored and sent to the print engine to begin output. Printing from memory increases output speed while ensuring original-quality for every set.



512MB DIMM

The Konica 7075 Digital Document System comes equipped with 64MB of



DIMM memory. Using all 4 slots in the easy-to-upgrade system yields a total of 512MB. DIMM memory's faster save-and-retrieve rate lets the Konica 7075 process data directly without having to access the hard disk for data throughput speeds that are much, much faster.

Gas Bearing

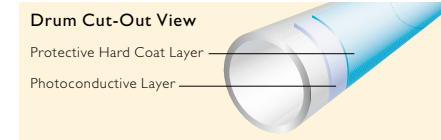
Konica's unique gas bearing minimises friction and wear, allowing the polygon mirror to achieve faster speeds



with greater stability and reliability. Simply put, this means faster output for an extended life.

OPC Drum

The maintenance cycle of a machine is determined in large part by the durability of its drum. This is so because the drum is subjected to the most wear in



the form of direct contact. Konica solutions for controlling the degradation of the drum are many, including the innovative Longlife Quality Control system which measures and compensates for electric potential buildup. The Konica 7075 Digital Document System also incorporates a newly developed hard coat layer for the drum. Thanks to this coating, the drum provides improved performance and excellent durability over an extended lifetime. Another important feature is the new developer which assists in enhancing performance and durability while being

easy on the environment. Together, these improvements ensure excellent performance for a longer time, something every office needs.

Abundant Resources

The Konica 7075 Digital Document System is designed to support even the busiest offices in need



of high-volume in-house publishing. The extra large size toner bottle holds plenty of Konica's exclusive ultra fine toner. The large size minimises replacement frequency, allowing more output between toner refills.

75 PPM/CPM

In real terms, the Konica 7075 Digital Document System is very fast. It can deliver output from the console or over the network at a constant 75 cpm/ppm. But the true speed behind the Konica 7075 is much deeper. The high-throughput Print Controller and quick-transfer DIMM memory work with the fully automated paper handling and finishing functions to reduce total work time, improving completion speed even further.



KONICA 7075. A PROFESSIONAL JOB EVERY DAY!

THE PERFORMANCE CONCEPT OF PROFESSIONALLY PRODUCED DOCUMENTS.

In our fleeting technology age, demands on communication facilities increase automatically. Copiers have long been more than just copiers, and printers are not just printers. Copying and printing systems today have to offer far more.

Like the Konica 7075 Digital Document System that puts the required information onto paper individually at the required time and in high-quality form. And the Konica 7075 has lots more under its hood. Be impressed by the wealth of options offering overwhelming functions. Starting with the wide variety of layouts, but by no means ending with the professional finisher.

Konica 7075 Digital Document System – the multi-talent for infinite printing adventures.



DIGITAL COPYING

5-Cycle Stackless Automatic Duplexing Unit (ADU)

One of the greatest advantages of digital technology is the ease with which it can perform complicated tasks. Taking full advantage of this Konica's 5-cycle stackless ADU provides a fast and efficient way to output information without wasting time and resources. Unlike other stack-type duplexing systems, the Konica system realises an extremely high 80% efficiency rating.



Improved Paper Feeding

An improved paper feeding mechanism supports high-speed reliability for in-house publishing. The contact area has been increased by shortening the distance between rollers, adding an extra roller and by increasing the diameter of all the rollers. This new system achieves excellent performance while minimising the risk of paper jam for even heavy weight paper.

New Reverse Automatic Document Feeder (RADF)

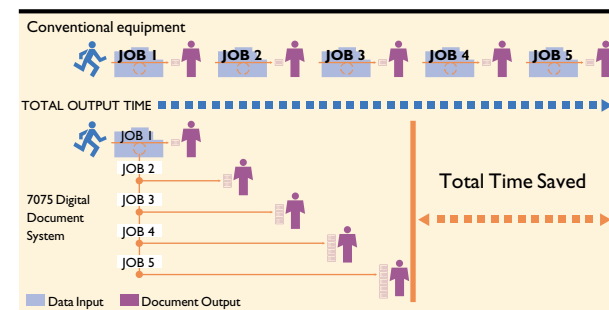
The 100% efficient RADF makes it fast and easy to create quality documents at the console. The 1 to N feeding system (face up) enables real-time output, while the Sheet-Through Scanning mechanism allows originals to be scanned at high-speed using a fixed scanning lamp. The RADF is a heavy duty performer capable of handling up to 100 sheets of mixed size originals and paper weights up to 200g/m² without slowing down. This system is so advanced it even automatically corrects misaligned originals.

6,150-Sheet Paper Capacity

Three universal paper trays source a total of 2,000 sheets of any size paper up to A3 wide. Of course, these paper trays are also equipped to handle heavy stock paper up to 200g/m² without a problem. Add an additional 150 sheets with the Multi-Sheet Bypass, or empower your system with the optional Large Capacity Tray which holds a total of 4,000 sheets.

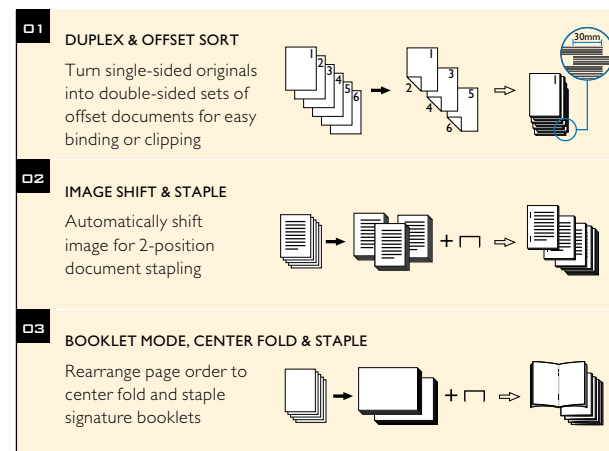
Multi-Tasking

At the centre of your office you need a machine that is ready for business all the time. With the Konica 7075, up to 5 copy and print jobs can be input to memory for continuous output in a multi-user environment. As soon as the current job is completed, the next job begins to print automatically. Five-job multi-tasking keeps your office working at top speed.



Booklet Making

Designed to fully support in-house document production with the Konica 7075 Digital Document System, the FS-108BM optional finisher is a resource saver. This three-tray type finisher provides advanced document production capable of satisfying even the busiest offices. As a finishing solution, the FS-108BM adds centre folding and centre stapling capabilities to standard finishing, ideal for creating publications in house. Use it with the highly-efficient duplexing system and the Combination editing modes or



Booklet mode, and there is no need to send work to a print shop ever again. Konica makes on-demand printing solutions easier than ever.

Cover Insertion

An optional Cover Insertion tray can be added to the FS-108BM finisher. This post-engine input tray allows you to feed pre-printed cover sheets for folding and stapling together with the content pages. Cover Insertion supports the use of heavy stock paper up to 200g/m² for adding a professional look to your documents.



FS-108BM

KONICA 7075. FLEXIBLE TEAMWORK.

THE DIGITAL SOLUTION FOR THE WHOLE COMPANY.

By networking databases, control software and print servers with the digital printing and copying system it has become possible to handle printing jobs quickly and flexibly from every workplace.

Simply link the Konica 7075 Digital Document System to your network using the optional print controller and everyone in the company will have access to a central printing system. The total scope of performance will, of course, then be available to the entire company.

And if things have to run even faster, two Konica 7075 will work together via the optional tandem interface. And they will produce no less than 150 sheets per minute.

The tandem Konica 7075 Digital Document System – a boost when working together.



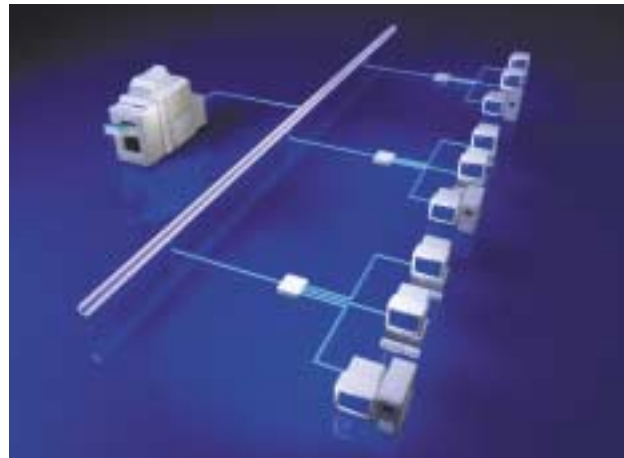
NETWORK PRINTER

Print Controller

The IP-601 Print Controller is designed by Konica specifically for use with the Konica 7075. This 500MHz IP supports high-speed and high-volume throughput for large size offices or busy departments using either 10Base-T or 100Base-TX ethernet formats. Connection to the Konica 7075 is improved using an IEEE 1394 interface protocol to realise 75 ppm, 600 dpi printing.

LAN Compatibility

The Konica 7075 achieves excellent network throughput via a conventional 10Base-T connection. And for even faster processing, the 100Base-TX compatibility reduces network traffic and increases communication speed to 100 Mbps.



Multi Platform

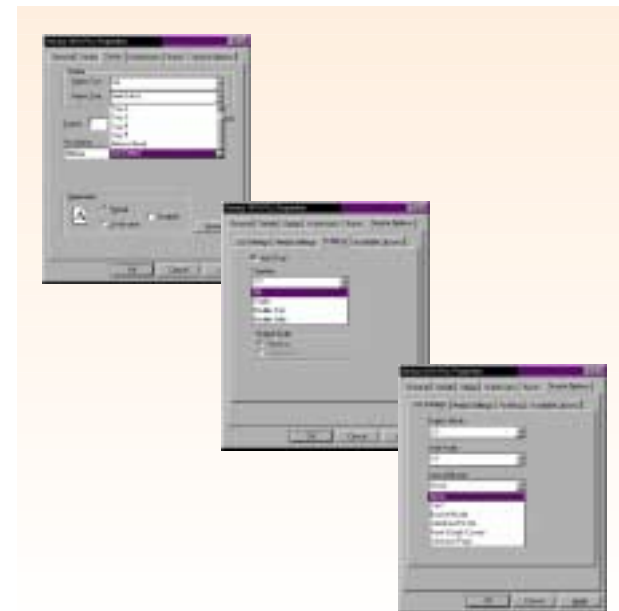
The IP-601 is powerful as well as flexible. Most protocols in the client/server market are supported, including IPX/SPX, TCP/IP and AppleTalk®. The IP-601 also brings printing capabilities to a multi-platform environment which may include Windows®95, 98, NT® 4, 2000, (or later) Macintosh® OS 7.1 (or higher), and even UNIX based systems.

Page Description Language

Accurate, high-speed print output requires precise communication between your PC and the printer. This is the job of the PDL. The IP-601 uses PCL version 5e, which is common to most office printers. An optional upgrade for use with the Adobe® PostScript®3™ (not available on first release) interpreter is an excellent choice for businesses which often print photos and complex graphics.

Print Driver

Easily turning desktop publishing materials into finished products is one of the major advantages of a connected Konica 7075 Digital Document System. The print drivers for the Konica 7075 provide complete and easy access to printer features. Using either the standard PCL or optional PostScript® drivers, PC users can easily enter print settings for basic and advanced output. All at once, produce multiple originals using the sort, staple or fold and staple modes to generate professional quality signature booklets. Among others, enter selections for two-sided output, paper size and even a customised watermark using the easy-access print drivers.



Web Utilities

Web-based printer management provides printer access from any Internet-connected terminal. Using nothing more than your web browser, remote access allows users to verify settings, printer status, toner and paper quantity, as well as check on current print jobs. Web Utilities requires your Konica 7075 Digital Document System to be connected to your office LAN via the optional KN-302 Network Interface Card.



Tandem Connection

Excellent expandability makes it possible to connect two or even an infinite number of Konica 7075 Digital Document System to work together. This way, data sent or scanned to one machine can be output using all connected machines. Using a two-machine configuration, your office can achieve 150 ppm/cpm document productivity without tying up space and requiring specialised training, such as with other more expensive document systems. Tandem connection with the Konica 7075 is so flexible you can use all connected machines separately or in combination for maximising office resources.



KONICA 7075. TECHNICAL SPECIFICATIONS.

Konica 7075 Main Specifications

Type	Console Model with Fixed Platen
Process	Electrostatic Lasercopy
User Operation	Touch display with detailed user instructions, Status Screen, Check/Help Mode, Proof Copy
Copies/prints per minute	75 pages A4/44 pages A3
First Copy Out Time	≤3.9 Seconds (A4)
Warm-up Time	≤ 6 minutes
Original Processing	Electronic Recirculating Document Handler – 100 sheets A5R to A3
Original Feeding	Face-up, 1-to-N
Resolution	Scanning 400x400 dpi/400x600 dpi Printing 400x600 dpi by choice
Image Memory	64MB standard (upgradeable to max. 512MB)
Memory Capacity	64MB = approx. 330 pages (6% coverage)
Continuous Copying	Up to 9,999
Exposure	Automatic or Manual; plus two User Settings
Magnification	1. Fixed Ratios: Same size:1; Reductions 0.50/0.71/0.82/0.86; Enlargements 1.15/1.22/1.41/2.00 2. Three Special ratios / User Sets 3. Zoom 33% to 400%, adjustable in 1% increments including bi-directional zoom
Paper Sizes	A5R to A3 (314 x 445mm), A6 (from bypass)
Paper Supply	Two front-loading trays with 500 sheets each, large Capacity Tray for 1000 sheets, Multi-sheet Bypass for 150 sheets
Paper Weights:	60 to 90 g/m ² standard paper; 50–200 g/m ² special paper
Duplexing Process	Direct unlimited duplexing for sizes A5R to A3
Special Functions	Job Reservation (5 jobs), Booklet Mode, Image Rotation, Electronic Sort (without Finisher), Image Repeat, Image Insert, 4-in-1/8-in-1, Quality Adjustment Settings: Fine/Superfine Mode, Original Quality (Photo/Text/Increase Contrast), Image Overlay, Non-Image Area Erase, Auto Layout, Reverse Copying, Chapter, Cover & Sheet Insertion, SDF (50–200g/m ²), Program Job, Thin/ Thick paper; Watermark/Stamp/Image Overlay (with optional HD), Wide Size Printing, OHP-Interleave, Image Shift, Reduce & Shift, Book Copy (incl. Front & Back Covers), Frame & Fold Erasure, Mixed Originals, Job Memory (30 patterns), Copy Interrupt during jobs, Auto Tray Switch, Auto Reset, Power Save, Self Diagnostic System, Electronic Copy Monitor (1000 codes), Weekly Timer
Yields	OPC drum: 1,000,000 pages Developer: 1,000,000 pages Toner: 50,000 pages
Monthly Volume	Maximum 500,000 pages
Power Supply	230V, 50 Hz., 15A
Dimensions	887mm(W) x 775mm(D) x 1160mm(H)
Weight	Approximately 390 kg (full system), W/LCT

Power Saving

Even though the Konica 7075 is designed for heavy-duty work, it is also very considerate to the office environment. Several power saving features like Standby mode and Auto Power Off work to conserve energy without sacrificing productivity.



Toner Recycling

Konica's unique Toner Recycling System cleverly detects unused toner on the drum and returns it to the bottle for future use. This system enables higher efficiency as well as keeping the drum free of excess toner.



IP-601 Print Controller (Optional)

Design	Built-in Tower Type
CPU	Intel® Pentium® III 500MHz with cache
Memory capacity	DIMM 32MB (standard), up to 512MB max.
HD	4.3GB (built-in)
Compatible OS (optional)	Windows® 95/98/NT®4.0, Macintosh® OS 7.1 (or later)
PDL	PCL5e (standard); Adobe® PostScript®3™ (optional)
Fonts	PCL5e: 45 types (standard); PostScript®: 136 types (optional)
Printer Drivers	PCL5e: Windows® 95/98/NT® 4.x (or later) Adobe® PostScript® compatible: Windows® 95/98/NT® 3.5x (or later), 2000, Macintosh® 7.1 (or later)
Output speed	75 ppm (400, 600ppi)
Max. resolution	600dpi x 600dpi
Interface	Ethernet 10Base-T, 100Base-TX
Protocol	TCP/IP, IPX/SPX, AppleTalk®

Optional Accessories

LT-401: Large Capacity Tray for 4,000 A4 sheets
LT-411: 4000 Sheet Tray, A4 to A3
FS-108BM: 3-tray Finisher/Booklet Maker
PI-108: Post Inserter
TU-108: Trimming Unit; only with FS-108BM
IP-601: Controller
Hard Disk: HD-102
Network Card: KN-302
Tandem Printer Kit: TDP601
64MB/128MB Image Memory Upgrades

† TU-108 – details to be advised

Solid Design

As a heavy duty office machine, the Konica 7075 Digital Document System is ready to handle all high volume office output. Supporting its high-volume capabilities is a 1" reinforced, pipe and plate chassis. This solid construction ensures that the internal mechanisms of the Konica 7075 are well protected, as well as making the Konica 7075 very quiet. This solid frame, together with the space-saving design concept, give the Konica 7075 a very small footprint for a machine in this class, allowing it to be placed in almost any part of your office. Solid and dependable,



yet quiet and easy on the work environment—the Konica 7075 is a powerful machine that fits in the front office.

Quality Engineering

As a historical leader in the field of imaging and now digital imaging, Konica has the unique advantage of accumulated experience. This translates into engineering that takes every detail into consideration. In a heat transfer system, for example, melting the toner onto the paper suddenly increases temperature which can shrink the paper size ever so slightly or cause it to bend at the edges. The Konica 7075 Digital Document System accurately heats both sides to avoid any bending. It also adjusts the image size of the second page in a duplex copy to account for paper shrinkage. In short, Konica's digital technology works hard so your output materials are of excellent quality.



The Konica 7075 is manufactured at a certified factory for ISO9002:1987/BS5750:Part2:1987/EN2900201:1987/JIS Z 9902:1991



PostScript® is a registered trademark of Adobe Systems, Inc. Windows and Windows NT are registered trademarks of Microsoft Corporation. Macintosh is a trademark of Apple Computer, Inc. NetWare is a trademark of NOVELL, Inc. UNIX is a trademark, exclusively licensed by X/Open Company Limited. Intel and Celeron are a registered trademark and trademark of Intel. Other company and product names are registered trademarks and trademarks of their respective companies.



Registered Trademark of Peerless Systems Corporation.

